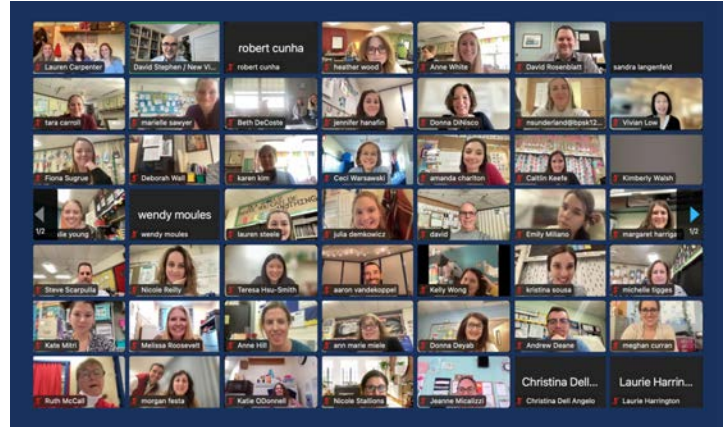


Fox Hill Elementary School Faculty Workshop 3.22.23

The Fox Hill Elementary School faculty participated in an Educational Visioning Workshops from 2:30 – 4:30 PM on March 22, 2023. The Visioning Workshop was facilitated by New Vista Design and DiNisco Design, with the goal of leading participants through a step-by-step visioning process aimed at capturing their best thinking about Fox Hill Elementary Schools’ current and future educational goals and priorities and connecting them to best practices and possibilities in future-thinking school facility design. If you have questions about the workshops or would like to add additional priorities to the list below, please email them to David Stephen at david@newvistadesign.net



Project Priorities

The following Educational, Architectural, and Community Priorities for the Fox Hill Elementary School’s educational programs and their renovated and/or new school facility, were brainstormed by workshop participants during the Faculty Workshop. Responses have been grouped thematically.

Educational Priorities

Safety and Welcome

- Students have a space where they feel welcomed, affirmed, and respected
- My greatest hope for this project is to create a safe, supportive school community with spaces for families, staff, and students to collaborate and use cutting edge technology
- Safe and supportive school

Student-Centered Learning

- Small group learning
- Small group instruction
- Co-teaching

Collaborative Learning

- Progressive use of instructional spaces
- Flexible seating areas
- Being able to gather all get together
- Multi-purpose rooms
- Spaces for grade-level collaboration

STEAM and Project-Based Learning

- STEAM and STEM programming
- Hands-on Learning
- Project-based learning

Inclusive and Differentiated Learning

- Inclusive learning for students within the LABBB program
- Sensory support
- Quiet spaces for testing
- Social emotional learning space and opportunities
- Social emotional break space
- Special Education wing

Outdoor Learning

- Flexible outdoor play
- Outdoor learning

Community Connections

- Community service projects

Architectural Priorities

Safety and Welcome

- Increased safety and security
- Welcoming entryway for families
- Key fobs for classroom doors - can be disconnected during lockdown
- Better door locks

Innovative and Flexible Learning Spaces

- State-of-the-Art Facility
- Multiple areas for multiple teachers in one room
- Options for more traditional classroom setups
- Subject specific rooms
- Multi-purpose rooms
- Connecting classrooms

Support for Differentiated Instruction

- Appropriate size sensory/occupational/physical therapy rooms
- Relaxation/Sensory Room for self-regulation
- Rooms for small group instruction
- Ample space for special education- small and large group learning
- Appropriate space/conditions for therapeutic activities (i.e., counseling, testing, group counseling, lunch bunch groups, etc.)
- Special ed learning center for each grade level

Robust Technology

- Wireless access throughout the building
- Adjustable intercoms

Sustainability

- Energy Efficient/Green energy
- Heat pump HVAC
- Natural light and big windows
- Working fans

Good Acoustics

- Acoustics to increase students' ability to hear teachers
- Sound absorbing walls in the gym

More Space

- More offices and classrooms

Health and Wellness

- Larger health office with separate care areas
- Ventilation
- Warm/hot water in rooms
- Clean water
- Lighting
- Good lighting with dimming
- Windows that open in all working rooms

Teacher Workspaces and Support

- Ample space for teachers to take lunch/breaks in
- Work room with machines
- Meeting rooms for teachers
- Teacher's lounge with space
- Support staff given their own areas to store materials, leave personal belongings
- Appropriate size classroom spaces for specialist teachers to teach smaller groups with natural light and thermal comfort.
- Teacher bathrooms close to classrooms
- Tutor and special education office/spaces

Good Storage

- Storage behind closed doors and cabinets
- Plentiful storage

Bathrooms

- Teacher bathrooms

Visual and Performing Arts

- Two music rooms with open space for movement activities, and separate spaces for band/orchestra lessons
- Sinks in art room
- Auditorium

Architectural Priorities *Continued*

Outdoor Learning and Play

- Access to outdoors from gymnasium
- Rubber play surface
- Fenced recess area
- Outdoor spaces for class projects and teaching
- Outside spaces to learn
- Trees and green space
- Access to outdoors from different spots in the school
- Separate outdoor play areas
- Shaded areas outdoors
- Several playgrounds, shaded outdoor space

- Space for those that might not be so rigorously inclined outside at recess
- Green space that is not restricted for soccer leagues or other sports
- More outdoor benches
- Outdoor lunch area

Safe Drop-Off and Pick-Up

- Ample parking for larger events
- Safe drop off and pick up area
- Traffic fluidity

Community Priorities

Safe Community Access and Use

- Safety- restricted community access during certain times
- Same locks for all doors in the building so we can use only one key
- Lobby for parents to wait
- Secure doors that lock automatically
- Safe areas for all people
- Community room for scouts to use
- Ample parking

Long Term Viability

- Creating a green school
- A building that matches our environment
- Foresee increase student body increases

Community Gathering Spaces

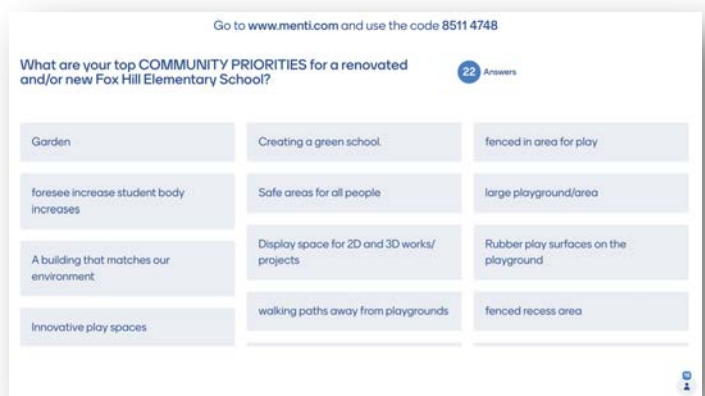
- Auditorium
- Multi-Purpose Space

Display and Exhibition

- Display space for 2D and 3D works/ projects
- Welcoming spaces

Access to Outdoor Spaces

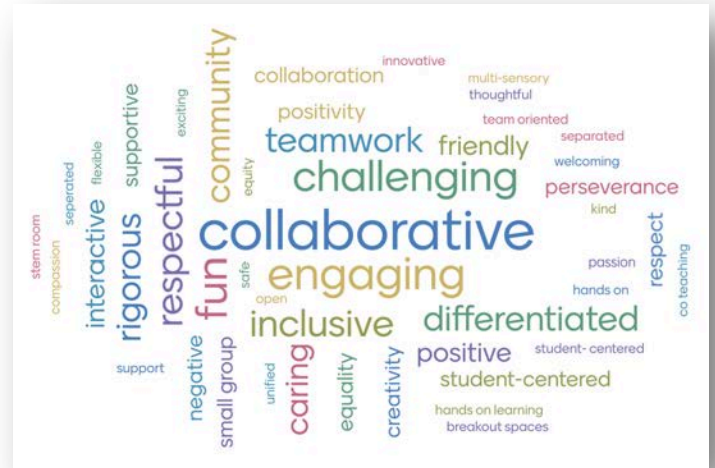
- Fenced in area for play
- Large playground/area
- Rubber play surfaces on the playground
- Walking paths away from playgrounds
- Outdoor space for more individual play (art reading cards)
- Outdoor benches and tables
- Shaded outdoor areas
- Space in recess area for students that are not so rigorously inclined
- Garden



Fox Hill Elementary Schools Culture of Teaching and Learning

When asked to share three words that best describe Fox Hill Elementary School’s culture of teaching and learning, workshop participants created the following Word Cloud.

- Collaborative (25 mentions)
- Engaging (11)
- Challenging (9)
- Respectful (9)
- Fun (9)
- Teamwork (6)
- Inclusive (6)
- Community (6)
- Positive (5)
- Rigorous (5)
- Differentiated (5)
- Caring (4)
- Friendly (3)
- Supportive (3)
- Student-Centered (3)
- Interactive (3)
- Creativity (2)
- Perseverance (2)
- Hands On Learning (2)
- Small Group (2)
- Equality (2)
- Separated (2)
- Negative (2)
- Open
- Passion
- Kind
- Equity
- Exciting
- Thoughtful
- Welcoming
- Compassion
- Unified
- Innovative
- Safe
- Multi-sensory
- Co-Teaching
- Breakout Spaces
- STEM Room

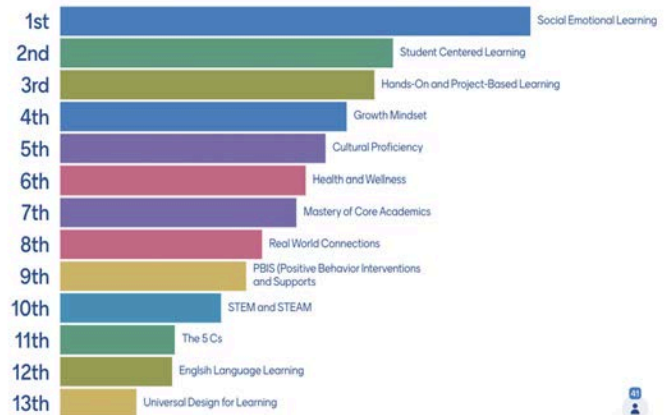


Fox Hill Elementary Schools’ Priority Educational Focus Areas

A set of priority educational focus areas were introduced to the EVG during Workshop One as being of key importance to Burlington Public Schools and Fox Hill leadership. Workshop participants then rated them in order based on their own priorities, resulting in the following listing.

1. Social Emotional Learning
2. Student-Centered Learning
3. Hands-On and Project-Based Learning
4. Growth Mindset
5. Cultural Proficiency
6. Health and Wellness
7. Mastery of Core Academics
8. Real World Connections
9. PBIS - Positive Behavioral Interventions and Supports
10. STEM and STEAM
11. The 5 Cs
12. English Language Learning
13. Universal Design for Learning

Which programmatic focus areas are most important to you within BPS elementary schools ?



Fox Hill Educational Focus Areas in Practice

When asked to respond to the following list of educational focus areas and describe what they look like in practice at Fox Hill Elementary School, either now or in an aspirational future, workshop participants responded with the following comments.

Present Practices

- Social Emotional Learning is happening
- There are SEL spaces within classrooms
- Students have choices
- We try to be as inclusive and differentiated as possible
- We support neurodiversity, self-advocacy, and self-regulation
- Now, one size fits all for students
- For English Learning - A space that shows they are valued
- Special Education wing-Learning centers at each grade level to provide a space for all learners
- Restorative justice is predominantly non-existent
- Space for student belongings (coats, backpacks, etc.)
- Small work rooms/areas for students in library
- Amplification/Mics for teachers to use

1. Social Emotional Learning
2. PBIS
3. Student Centered Learning
4. Real world Connections
5. Cultural Proficiency
6. English Language Learning
7. STEM and STEAM

Desired Future Practices and Spaces

- Spaces in each class as well as around the school to better support students SEL at different levels of need
- Easily monitored break spaces/sensory spaces for SEL breaks in an environment that is also calming
- Flexible space for teachers to use
- More staff resources
- Updated projectors/connections for projecting
- More community Involvement
- More assemblies and presentations from community
- Improved communication methods/translation for ELL families
- Improved inclusive/differentiated Instruction
- Restorative justice needs to be welcomed and embraced by all staff
- Enhanced integration and collaboration space and opportunities with school-based sub separate program
- Quiet spaces that allow students to regulate themselves within the classroom
- Storage in smaller specialist classrooms for supplies and personal possessions
- Small dining rooms with round tables
- Rethinking educator day, load and time could lead to stem specialists seeing students for Sci/cs periods that would offer more prep/collab time for teachers

Fox Hill Educational Focus Areas in Practice

When asked to respond to the following list of educational focus areas and describe what they look like in practice at Fox Hill Elementary School, either now or in an aspirational future, workshop participants responded with the following comments.

Present Practices

- These values are built into our culture, though the staff must be very creative in how to enact them
- Growth Mindset is addressed with students
- We stress perseverance
- We can walk around the building “horseshoe”
- Lots of windows for sunlight
- Windows that open for fresh air
- Encouraging making mistakes
- Health and wellness for students with the stress and pressure that comes with being a kid today
- There is outdoor storage for outdoor play equipment
- There is lots of space for football and soccer games at recess

8. Growth Mindset
9. Universal Design for Learning
10. The 5 Cs
11. Health and Wellness
12. Mastery of Core Academics
13. Hands-On and Project-Based Learning

Desired Future Practices and Spaces

- It would be great to still have a space for walking a large loop or something like that
- Better kitchen design to support adequate nutrition and choices for students and teachers
- Growth Mindset continues to be addressed with students
- Growth Mindset as a community through assemblies
- Stress perseverance
- Sensory Walls
- Sensory related walking pathway
- Break up rooms for quiet reflection or calming for special ed students
- Smaller studios for movement- dance, yoga, etc.
- Different size small classrooms to support different class sizes
- Less isolated rooms to encourage collaboration and connection between classrooms and grades
- Smaller common spaces for grade level meetings/activities with kids that can happen outside of the classroom but not in cafeteria
- More tables in open areas for student groups
- Room placement that fosters collaboration and connection between grades and with LABBB
- Workout studio and kitchen for teachers
- Outdoor learning spaces where we could teach regularly would go far toward student health and well- being. They need sun and air
- Areas/supplies for active free play (bikes, jump ropes, scooters, etc.)
- Keep large outdoor spaces
- More games available in the recess space that can be played with or without balls

Blue Sky Ideas

When asked to share their Blue-Sky aspirational ideas for a renovated and/or new Fox Hill facility, faculty responded with the following comments.

Flexible Classrooms

- Classrooms grouped together by grade level
- Flexible seating available for all classrooms
- Projection in all classrooms
- Control our own heating/AC in the classrooms/offices (2)
- Bathrooms in every classroom (2)
- Magnetic white boards in all rooms (2)
- Hard-wired clocks

Outdoor Learning and Play

- Outdoor tables (2)
- Outdoor water fountains near recess space
- Outdoor storage
- Garden
- Trees and shade structures

Sustainability

- Solar panels (2)
- Compost
- Air filtering

Teacher Amenities

- Separate eating and teacher workspace (2)
- Teacher locker room/ changing area (2)
- Space for nursing moms
- Rooftop dining space for teachers
- On site chef for teachers

Indoor Movement Opportunities

- Indoor play space
- Regulation size gymnasium
- Swimming pool

Storage

- Lockers/storage for students (3)

Security and Welcome

- Welcoming entryway
- Key fobs instead of keys for classroom doors - could be turned off during lockdown

Differentiated Instruction

- Sensory rooms not shared with OT
- ELL classrooms that reflect equity

NextGen Science

- STEM room
- Hydroponics

Gathering Spaces

- Common spaces and areas for small group instruction
- Collaborative spaces

Health and Wellness

- Functional health office in collaboration with the nurses

Ease of Access

- Covered walkways into the building and covered walkways to parent drop off
- Underground parking

Room for Growth

- Extra classrooms/offices for growth

Fine Arts

- Kiln room and storage spaces attached to art space

Desired 21st Century Design Patterns 1.0

The following set of priority “21st Century Design Patterns” for the design of the renovated and/or new Fox Hill Elementary School was developed by faculty members during the Faculty Workshop. Workshop participants were introduced to 32 “Design Patterns” that represent varied architectural design features of, and approaches to 21st century school facility design. Individual participants first rated each Design Pattern with a heart, thumbs up, or thumbs down, and were then given the opportunity to rate Design Patterns collectively in order of importance. The resulting list of Design Patterns has been placed in priority order based on the cumulative total of hearts, thumbs up, and priority ratings that each received.

Top 10 Design Patterns

1. Flexible Classrooms and Spaces (60 votes)
2. Breakout and Pull Over Spaces (58 votes)
3. Good Storage/Cubbies (54 votes)
4. Welcoming Arrival/Safe Drop-Off (53 votes)
5. Professional Work Areas (53 votes)
6. Security and Welcome (51 votes)
7. Push-In Special Education (51 votes)
8. Engaged Outdoor Play (51 votes)
9. Outdoor Connections and Learning (47 votes)
10. Collaborative Environments (46 votes)



Next 15 Design Patterns

11. Library Learning Commons (44 votes)
12. Flexible Furniture (44 votes)
13. Cafetorium/Multi-Purpose Space (44 votes)
14. Wayfinding and Streetscapes (42 votes)
15. Classroom Neighborhoods (41 votes)
16. Nooks, Caves, and Quiet Spaces (41 votes)
17. Greeting and Gatekeeping (40 votes)
18. Sustainability (40 votes)
19. Classroom Zones (39 votes)
20. Branding and Identity (37 votes)
21. Building as Teacher (36 votes)
22. Gathering Hubs and Presentation Spaces (35 votes)
23. Display and Exhibition (35 votes)
24. Clusters of Learning (32 votes)
25. Heart of the School (32 votes)



Remaining Design Patterns

- 26. STEM/STEAM and Makerspaces (32 votes)
- 27. Safe community Access (30 votes)
- 28. Extended Learning (27 votes)
- 29. Distributed Resources (22 votes)
- 30. Visible Learning and Transparency (18 votes)
- 31. Hallway Learning (15 votes)
- 32. History and Storytelling (12 votes)

